

UNIVERSITY *of*  
DENVER

COLORADO EVALUATION  
AND ACTION LAB

## Colorado Lab Newsletter

February 2021

Featured in this newsletter:

- Response, Innovation and Student Equity (RISE) Education Fund
- Phase II of the Early Childhood Workforce Dashboard Underway
- Welcome to New Colorado Lab Staff

---

### Response, Innovation and Student Equity (RISE) Education Fund



The COVID-19 crisis has had an enormous impact operationally, educationally, and economically on P-12 school districts, charter schools, and institutions of higher education, as well as students, parents, and families. To address the learning challenges related to the economic, social, and health impacts of COVID-19 and promote innovation, Colorado has awarded over \$40 million in grants to educational institutions using federal Governor's Emergency Education Relief Funds.

These resources are being used by educators to:

- Improve early literacy
- Strengthen the ability of parents and caregivers to support their children's schooling
- Improve English language skills for English learners
- Increase school engagement by addressing behavioral challenges
- Increase access to and success in postsecondary education

The Colorado Lab is supporting several awardees in moving their programs along the [steps to building evidence](#) to ensure that innovative approaches grow to be effective in improving student and family outcomes. The Lab will also document lessons learned to support other schools who might benefit from similar approaches.

For more information about RISE, contact [Dr. Kristin Klopfenstein](#).

---

### Phase II of the Early Childhood Workforce Dashboard Underway

A tool to help address Colorado's significant Early Care and Education (ECE) staffing shortage is about to get even better.

Launched last summer, the ECE Workforce Data Dashboard is making it possible for the first time to easily access a wide array of information, including local educator shortages, disproportionate shortages by certain professions, areas with high turnover, and areas that are demonstrating successful growth.

In Phase II, the Colorado Lab and CDHS' Office of Early Childhood (CDHS-OEC) are building on the original innovation to complete the data picture with:

#### Colorado Lab Data Informs CPR Reporting

Colorado Public Radio's Jenny Brundin shined a critical light on our state's early childhood workforce shortage, with coverage including Colorado Lab research. We encourage you to read and listen to this important, timely series.

- ["The Workforce Behind the Workforce: Confronting Colorado's Critical Child Care Staffing Shortage"](#)
- ["Refugee and Immigrant Women Show Promise as a Pipeline for New Colorado Early Childhood Educators"](#)
- ["Apprenticeships Aren't Just for the Trades. It's Also a Way to Bolster Colorado's Early Childhood Workforce"](#)

- Higher education and labor and employment data added through the [Linked Information Network of Colorado \(LINC\)](#) to better understand pathways into the ECE workforce;
- Supplemental CDHS-OEC data making it possible to create an early childhood workforce registry and provide ECE workers with professional development opportunities; and
- The development and piloting of a [My Colorado Journey](#) pathway connecting ECE job seekers and students to education planning and support resources.

Elements of the project will be released over the coming months with completion of this phase targeted for the end of 2021. Funding for Phase II of the dashboard is provided by the Federal Preschool Development Grant through CDHS-OEC.

For more information about ECE Workforce Data Dashboard and LINC, contact [Dr. Whitney LeBoeuf](#).

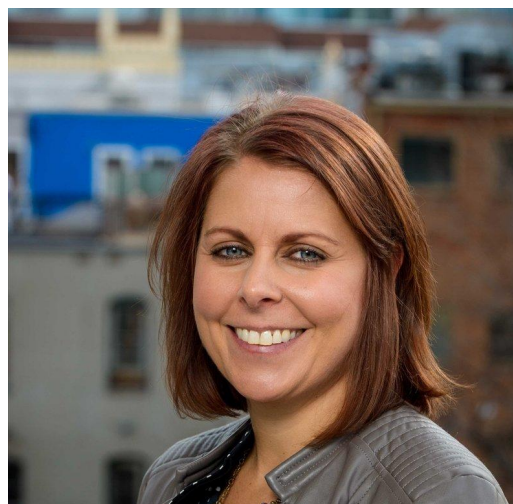
---

## Welcome to New Colorado Lab Staff

We are excited to introduce two new Colorado Lab staff members in their roles as Senior Researchers/Project Directors! Please help us to welcome Dr. Lauren Gase and Dr. Courtney Everson, both of whom bring deep expertise and a passion for using data to learn, improve, and activate policy change.

### Dr. Lauren Gase (right)

Lauren has led research and evaluation studies within nonprofit, consulting, and governmental settings - including the Los Angeles County Department of Public Health and the Centers for Disease Control and Prevention. She comes to the Colorado Lab from VentureWell, a nonprofit organization working to support social entrepreneurship. Lauren holds a PhD in Health Policy from the University of California, Los Angeles and a Master of Public Health from Emory University.



### Dr. Courtney Everson (left)

Courtney has enjoyed a rich career as a faculty member and applied researcher with Oregon State University, Midwives College of Utah, and Colorado State University. At CSU, she successfully led and supported dozens of foundation, state, and federally funded studies and initiatives focused on improving maternal health and positive child/youth development. Courtney holds a PhD in applied medical anthropology from Oregon State University with graduate-level concentrations in public health and women, gender, and sexuality studies.

[Read more about our team!](#)

---

### Stay Connected!

Follow us on Twitter!  
Email us at [admin@coloradolab.org](mailto:admin@coloradolab.org) if you have any questions or feedback.



[View in browser](#)



University of Denver  
Frank H. Ricketson Law Building  
2255 E. Evans Ave  
Denver, CO 80208

To manage which emails you receive from us, please [log in](#) to your account.  
To unsubscribe from our emails, [click here](#).