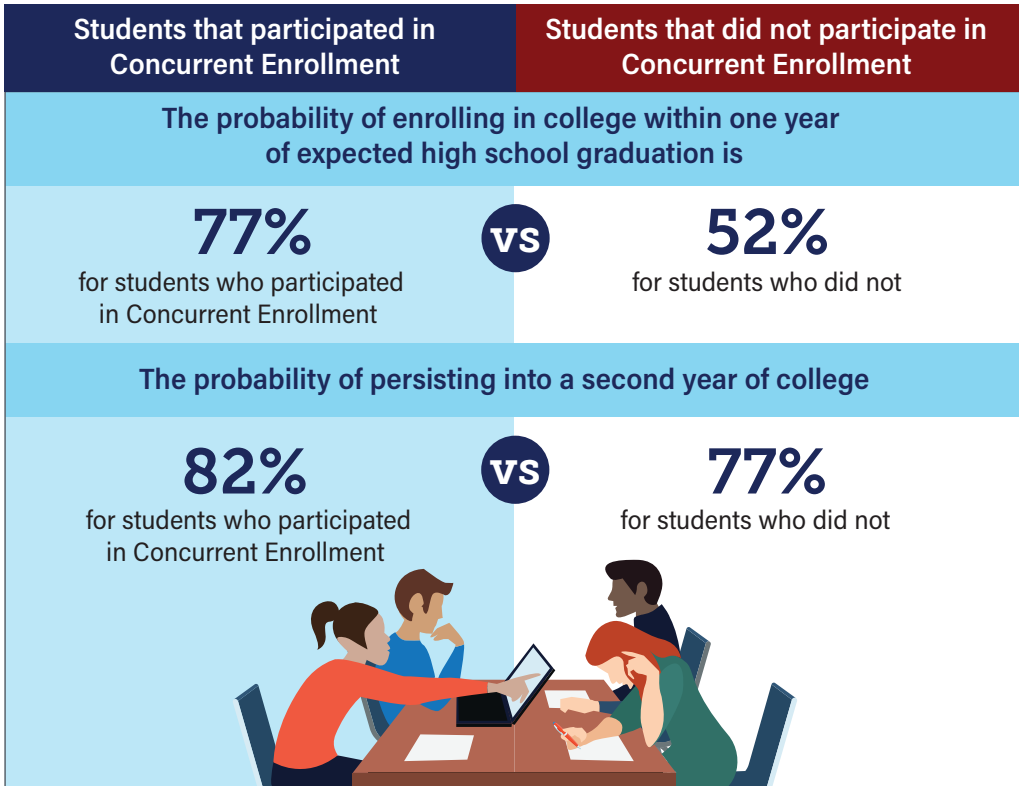


The impact of Concurrent Enrollment on postsecondary student success



What is Concurrent Enrollment?

Concurrent Enrollment is defined as the "simultaneous enrollment of a qualified student in a local education provider and in one or more postsecondary courses, including academic or career and technical education courses, which may include course work related to apprenticeship programs or internship programs, at an institution of higher education."

House Bill 09-1319 and detailed in the Concurrent Enrollment Programs Act C.R.S. §22-35-101 et seq. C.R.S. §22-35-103, updated 2015

How were comparisons made? In two stages.

Stage 1

Schools providing lots of Concurrent Enrollment opportunities for students were matched with schools providing few such opportunities

Schools matched on:

1

College-going rate

2

Average 9th grade reading scores

3

Percent free or reduced price lunch eligible

4

Urban vs. rural



Many Concurrent Enrollment options



Few Concurrent Enrollment options

Stage 2

Students taking Concurrent Enrollment classes at schools with lots of Concurrent Enrollment opportunities were matched with students who did not take Concurrent Enrollment classes at schools with few such opportunities

Students matched on:

1

9th grade reading scores

2

Free or reduced price lunch eligibility

3

Underrepresented minority

4

English language learner



Students taking Concurrent Enrollment classes



Students not taking Concurrent Enrollment classes