



UNIVERSITY of  
DENVER

COLORADO EVALUATION  
AND ACTION LAB

## Cross-System Research RFP and LINC Informational Webinar

May 13, 2019

[www.ColoradoLab.org](http://www.ColoradoLab.org)





UNIVERSITY *of*  
DENVER

COLORADO EVALUATION  
AND ACTION LAB

We believe that **smart, strategic partnerships** with government have the potential to improve people's lives.

[www.ColoradoLab.org](http://www.ColoradoLab.org)

# The Colorado Lab Approach

- **Responsive** to state and local government partners
- **Connects** state and local government with academic experts in Colorado and beyond
- **Prioritizes** work that wouldn't happen **but for** the Colorado Lab
- Guided by **build once, use often** philosophy



UNIVERSITY *of*  
**DENVER**

COLORADO EVALUATION  
AND ACTION LAB





# Polis Administration Bold Four Priorities

- Foster an economy that works for everyone
- Fulfill every child's potential regardless of zip code
- Move electric grid to renewable sources by 2040
- Save Coloradans money on healthcare  
(not in this RFP)

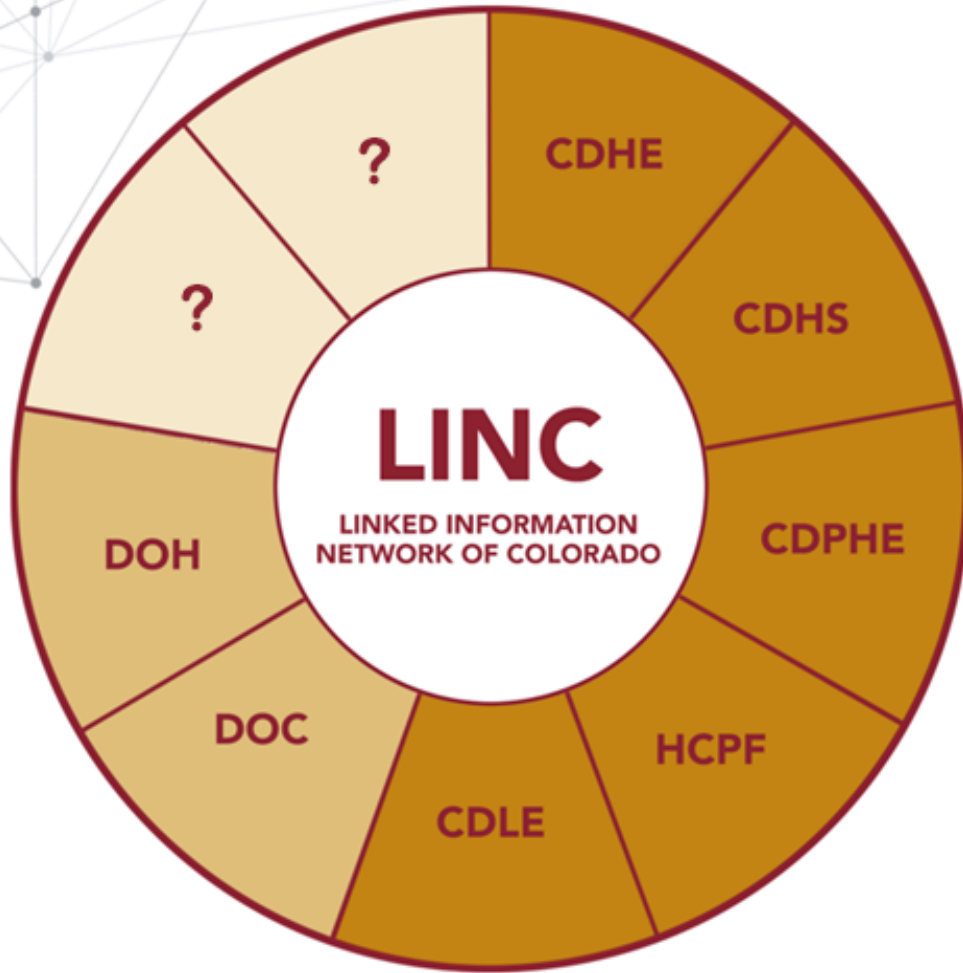




# Cabinet Working Group Wildly Important Priorities (WIPs)

- **Cannabis:** Innovative and balanced cannabis policy
- **Climate/Energy:** 100% renewable energy by 2040
- **Criminal Justice:** Reducing recidivism
- **Education/Workforce:** Equitable opportunities for lifelong education connected to workforce
- **Rural:** Cohesive development plan

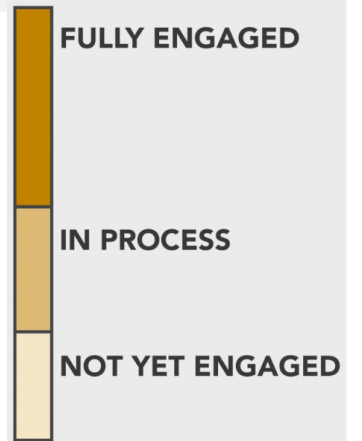




Governor's Office of Information Technology  
(OIT)

# LINC

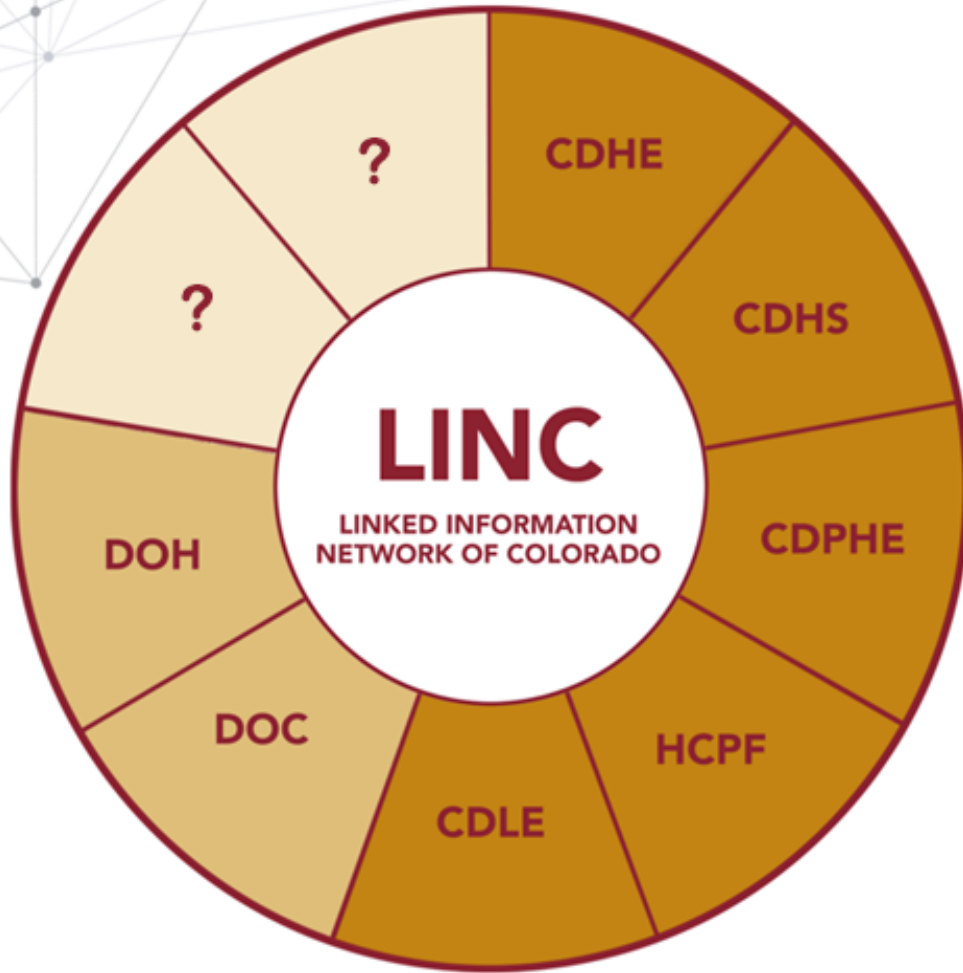
Linked Information  
Network of Colorado



- Consistent with **Build Once, Use Often** and responsive to pain points of siloed information.
- **Integrates** data across agencies for business analytics and research
- The Lab seed funds an **embedded data scientist** in OIT to perform LINC duties
- All data are **anonymized for end users** and **privacy** ensured



# LINC Process



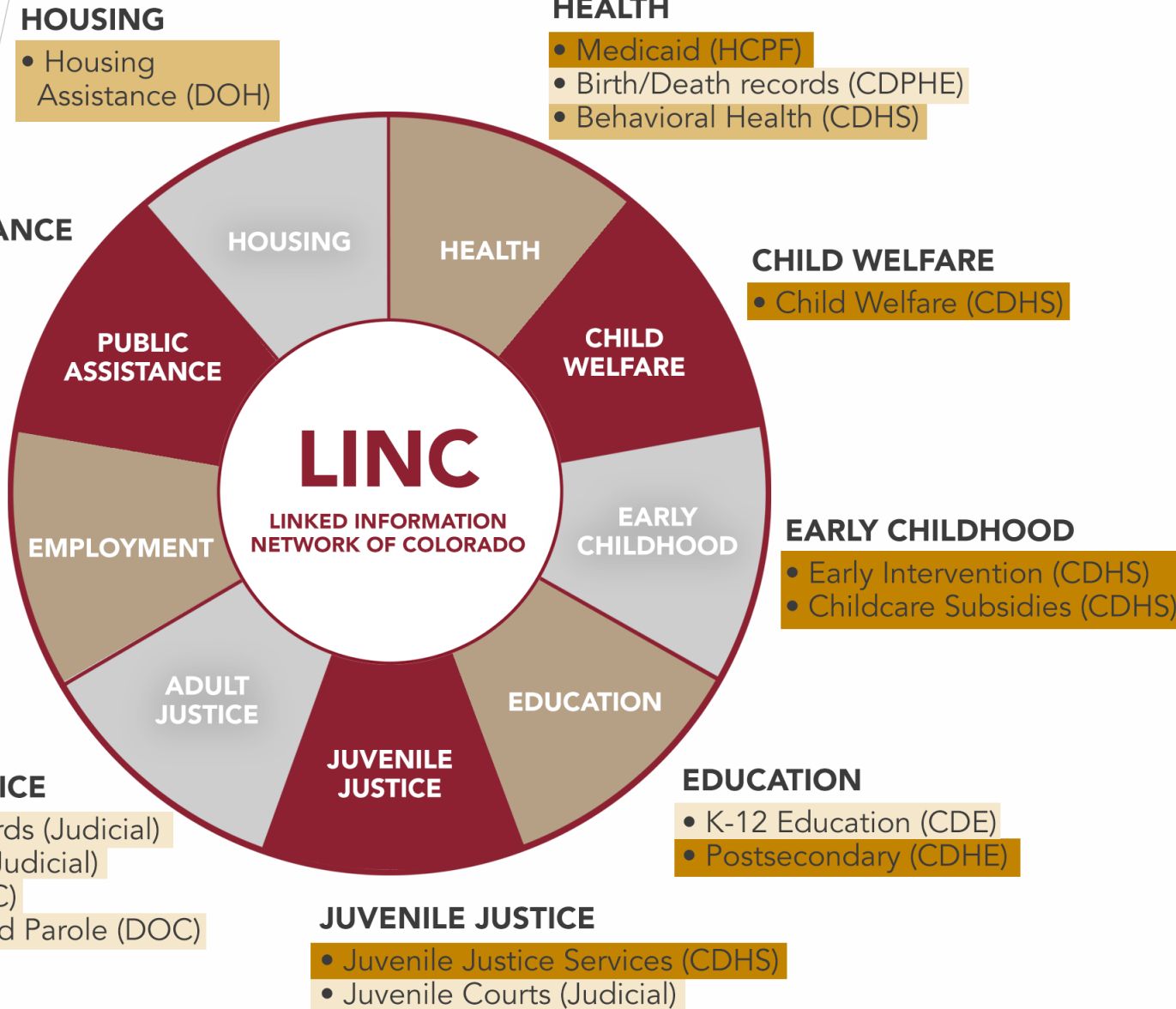
Governor's Office of Information Technology  
(OIT)

1. Consultation with LINC Director
2. Submit LINC request for review
3. Attend LINC review committee meeting
4. Sign Data Use License
5. Receive data and pay LINC fee
6. Submit appropriate LINC project reports



UNIVERSITY of  
DENVER

COLORADO EVALUATION  
AND ACTION LAB



## FULLY ENGAGED

- Early Intervention (CDHS)
- Childcare subsidies (CDHS)
- Child welfare (CDHS)
- Juvenile justice services (CDHS)
- Healthcare (Medicaid) (HCPF)
- TANF (CDHS)
- SNAP (CDHS)
- WIC (CDPHE)
- Postsecondary education (CDHE)
- Workforce Training Programs (CDLE)

## IN PROCESS

- Behavioral health (CDHS)
- Housing assistance (DOH)

## NOT YET ENGAGED

- Birth and Death records (CDHPE)
- Juvenile Courts (Judicial)
- Court records (Judicial)
- Probation (Judicial)
- Prison (DOC)
- Re-entry and Parole (DOC)
- K-12 education (CDE)



# Request for Proposals

## Eligibility for RFP

- Organizations that have the ability to conduct actionable research and engage in mutualistic partnerships with government agencies

## Types of Studies

- Descriptive studies using linked data across systems that put spotlight on priority
- Predictive models that can be routinely used by agencies to inform service delivery or other actions related to priority
- Causal studies of priority programs or policies implemented by or in partnership with state agencies
- Mixed method studies that inform theory of change for priority programs or policies implemented by or in partnership with state agencies



UNIVERSITY *of*  
DENVER

COLORADO EVALUATION  
AND ACTION LAB

# Request for Proposals

## Cross-System Research

- Policy or practice implications for two or more state agencies
- Requires data from two or more state agencies
- Collaboration between state agency and one or more local government, non-profit, or private partners



UNIVERSITY *of*  
DENVER

COLORADO EVALUATION  
AND ACTION LAB



# Menu of Colorado Lab Supports

- Supporting initial scoping of projects and methods
- Ensuring actionability of results before a project gets underway
- Facilitating outreach to and convening of stakeholders
- Connecting government staff with researchers
- Facilitating communication plan development and execution
- Supporting the identification, integration, security, and accessibility of data appropriate for project
- Coauthoring research products



# Budget Planning

1. **Award Range** is \$25,000 – \$150,000
2. Awards above \$75,000 require a 25% **research cost-share** in addition to those requested from the Lab
3. **No indirect costs** allowed
4. No-cost extensions unlikely to be approved
5. **LINC fee** must be included if applicable to proposal
6. **LINC consultation** must be scheduled by June 3





# RFP Process and Timeline



All submissions are due by noon of the date noted

# QUESTIONS?



UNIVERSITY *of*  
DENVER

COLORADO EVALUATION  
AND ACTION LAB

## Contact Us

### **RFP Questions:**

Elysia V. Clemens

Elysia.Clemens@du.edu

303-871-6262

### **LINC Questions:**

Whitney LeBoeuf

Whitney.LeBoeuf@du.edu

303-871-6445

## Follow Us

[www.ColoradoLab.org](http://www.ColoradoLab.org)



**Twitter: @ColoradoLab**